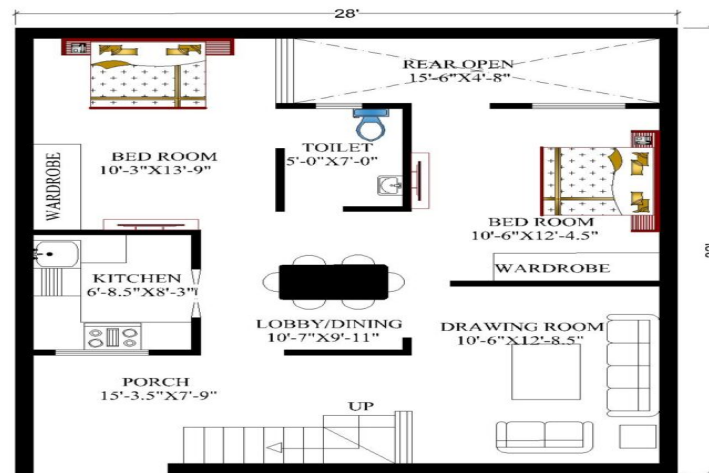
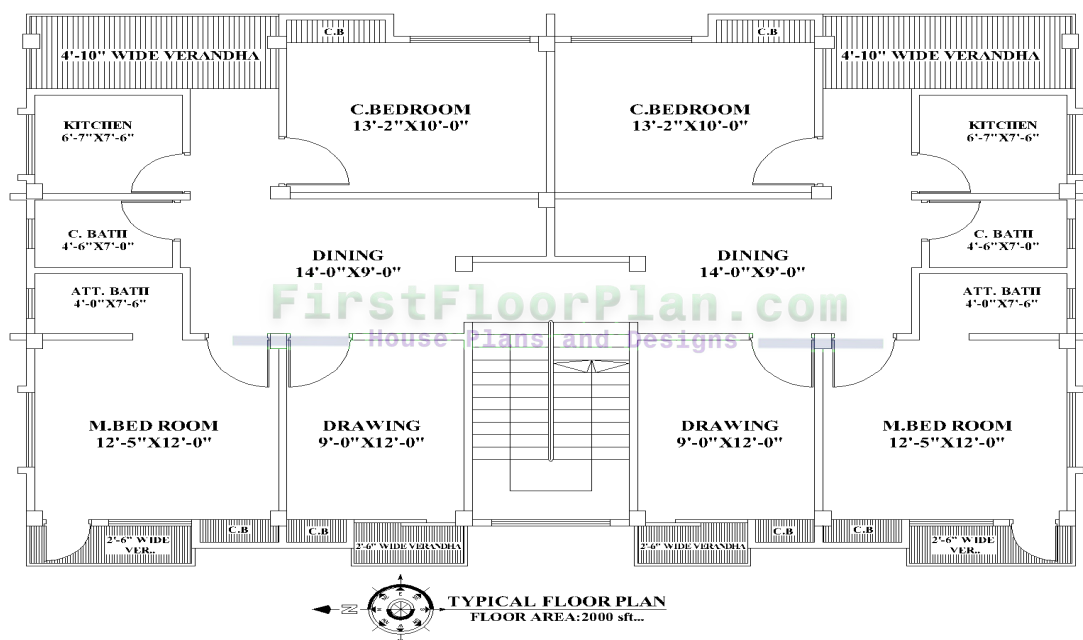


1. **Ground Floor Plan:** The ground floor plan, also known as the first floor plan, illustrates the layout and organization of spaces on the ground level of a building. It typically includes features such as entryways, living spaces, service areas, bedrooms (if applicable), outdoor spaces, and other areas specific to the building's design and purpose.



GROUND FLOOR PLAN

2. **Typical Floor Plan:** The typical floor plan represents a generalized layout and arrangement of spaces on any floor above the ground level. It serves as a standard design for each floor in a multi-level building, excluding the ground floor. The typical floor plan often includes residential units/rooms (for apartments or hotels), corridors, common areas, utility spaces, and vertical circulation (staircases, elevators).



3. **Basement Floor Plan:** A basement floor plan depicts the layout of the floor(s) below the ground level. Basements are partially or entirely below the ground and are typically used for storage, mechanical rooms, recreational areas, or additional living spaces. The basement floor plan includes features like rooms, storage areas, utility spaces, and any specialized areas specific to the building's design.
4. **Semi-basement Floor Plan:** A semi-basement floor plan illustrates a floor that is partially below ground level. It is typically designed with windows or light wells that provide some natural light and ventilation. Semi-basements may be used for various purposes, such as additional living spaces, offices, or storage areas. The semi-basement floor plan includes rooms, utility spaces, staircases, and any other relevant features.



5. **Mezzanine Floor Plan:** A mezzanine floor plan represents a partial floor inserted between two main floors of a building. Mezzanines are intermediate levels that do not extend across the full footprint of the floor below. They are often used to create additional usable space, such as an elevated platform for offices, galleries, or seating areas. The mezzanine floor plan includes the layout of the mezzanine level, access points, and connections to the floors above and below

