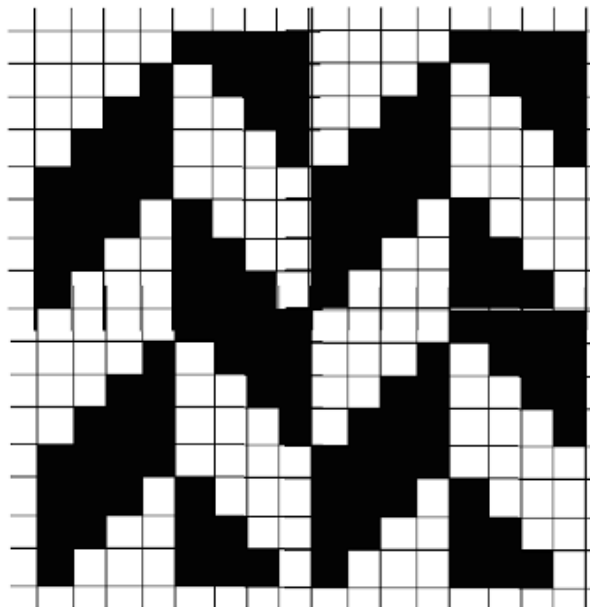
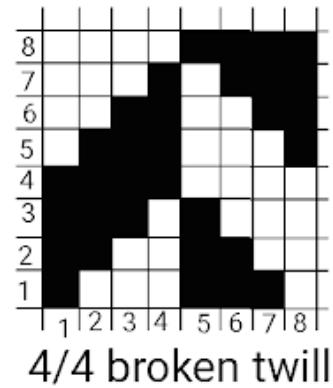
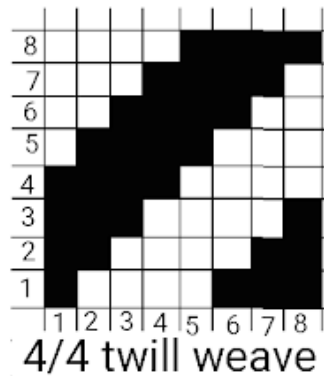


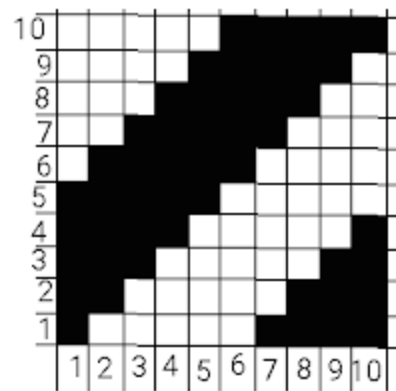
## Broken Twill Weave

The broken twill is the derivative of twill weave. It has the combination of right hand twill and left hand twill. This weave differs from pointed twill. In broken twill weave, the ends of the right hand and left hand twill get raised and lowered just opposite of the each other. One series of warp and one series of weft are used. The angle of twill lines gets changed by changing ends per inch or picks per inch. Two types of broken twill weaves are woven.

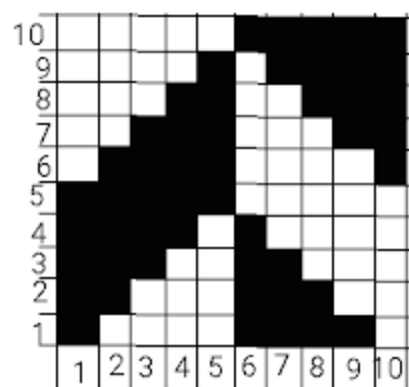
- 1 - Horizontal broken twill.
- 2 - Vertical broken twill.

### Horizontal Broken Twill

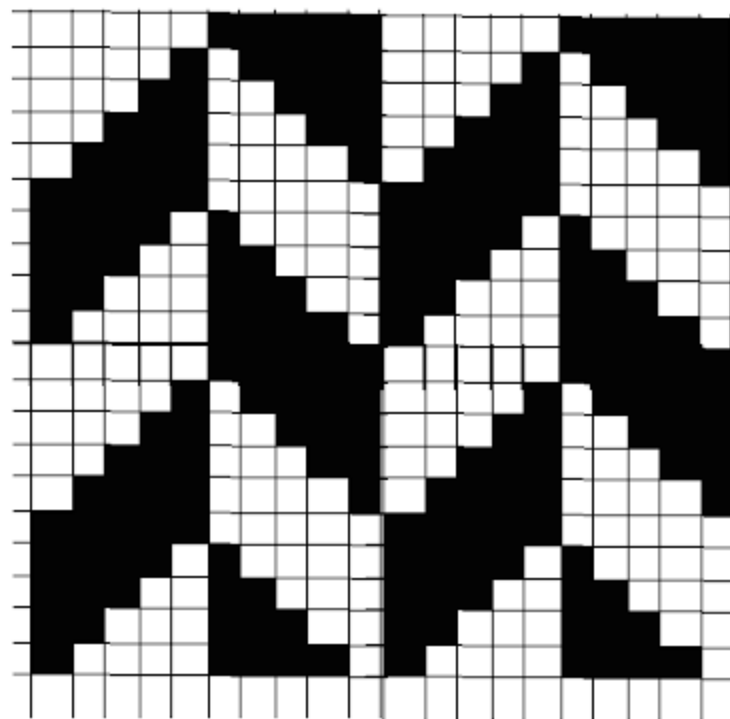




5/5 twill weave



5/5 broken  
twill





# Vertical Broken Twill

